

Wash your bunker sand without removing it

Significantly increase the longevity of your bunker sand by washing it

◆ The only bunker liner capable of withstanding a high-pressure irrigation water stream

✕ A 'chimney' removes silts, algae, and clays that contaminate your bunker sand by floating out these smaller particles, leaving only the heavier sand particles in place

🌱 Creates dryer bunker sand in a few hours

🌊 Conditions your sand back to new again



Washing the sand with the Capillary Wash Box not only cleans it but also conditions it. By removing the fines that accumulate at the base of the bunker, the sand at the base dries out more effectively. Thus, washing the sand is an excellent way to enhance performance and playability without the need to replace or add any new sand.



Distributed by:



Hong Kong | Singapore | Malaysia | Australia

Email: info@centaur-asiapacific.com

Website: www.centaur-asiapacific.com

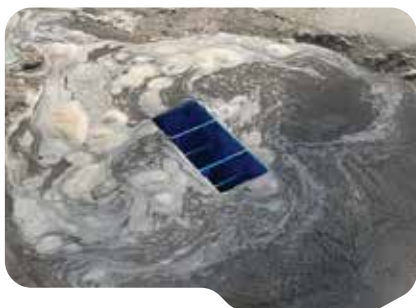
Installation Guidelines

The Capillary Wash Box is installed in the Vault in the lowest part of the bunker. If your vaults already exist, please disregard step 2.



Washing Instructions

The Capillary Wash Box and this system are specifically designed to remove organic materials (algae, clippings, leaves, etc.) and particles smaller than 0.05 mm that float in water for some time. These particles have the potential to darken the sand's color and slow infiltration rates, but they can be effectively removed by following the washing instructions.



- 1 Locate the drain pipe in the bunker and identify the lowest point of the bunker floor above the pipe for placing the vault. (If a vault already exists, please find it and move to step 3).
- 2 Remove the sand and cut out an area approximately 1 ft wide and 3 ft long and remove the Capillary Material.
- 3 Remove drain gravel, dirt, and completely expose the pipe.
- 4 Cut a hole in the top of the drain pipe, making it approximately 2 inches wide and 6 inches long. This opening needs to be positioned at the center of the vault, and it should align with the center of the Wash Box.
- 5 Place the Wash Box with the lid mounted on it on top of the drain pipe. Ensure it is set all the way down to the top of the pipe, and that the lid's top is just below the level of the Capillary Material in the bunker floor.
- 6 Cut a piece of fabric large enough to cover the walls of the vault and cut an X in the middle and slide it over the Wash Box.
- 7 Backfill the vault with clean bunker sand .

- 1 Locate the Vault with the Wash Box and remove the bunker sand to expose the lid.
- 2 Remove the lid and place enough extensions (the middle part of the Wash Box) so that the top of the highest extension is above the level of the sand surrounding the vault.
- 3 Connect a hose with a nozzle to the irrigation system and start by washing the area immediately surrounding the Wash Box to ensure the layer of sand is never higher than the top edge of the Wash Box extension. This must be done periodically while washing to prevent larger sand particles from entering the drainage pipe.
- 4 Move as far away as possible from the wash box, and wash the sand. The water stream should be at a 2 ft distance from the sand you are currently washing, pointing towards the Wash Box.
- 5 Work the water stream in such a way that the sand is not displaced too much but is washed in place while any contaminants flow away towards the drainage via the Wash Box. You may have to push the dirty water along towards the Wash Box.
- 6 Ensure thorough washing all the way to the edge of the bunker, where excess sand is often found. The goal is to re-establish the original sand depth and edge across the whole bunker.
- 7 On steeper faces, be careful not to wash too deep if not necessary as the sand will have to be pushed back up the face after washing.
- 8 Periodically check the drainage pipe in the Wash Box to ensure that larger sand particles do not wash inside and cause a blockage. While some particles may inevitably reach the pipe, clean it by directing the water stream into it. Typically, this step should not need to be performed more than once or twice, and it is usually done for about 5 minutes at the end, after the entire bunker has been washed.
- 9 Upon completion, push the sand back to ensure a uniform sand layer in the bunker. Sometimes, new, clean sand must be added to achieve the desired sand depths throughout the bunker.