

TINES DIRECT

Quality replacement tines, blades, brushes & accessories

Exclusively distributed by

 **CENTAUR**
ASIA PACIFIC

VERTICUT / SCARIFYING / SLITTING BLADES

Amazone/Graden/Jacobsen

Page 1

John Deere/Ryan/Mataway/Sisis

Page 2

Huxley/Long Equip/Trilo/Toro/Wiedenmann

Page 3

TINE ADAPTERS

Various adapters - Selvatici/Soil Reliever/Vertidrain/Toro/

John Deere/Ransomes/Ryan/Multicore/Groundsman/Wiedenmann

Page 4

AERA-VATOR TINES

Aera-Vator 3 inch Spike Tine

Page 5

BLEC GROUNDBREAKER / SANDMASTER BLADES

Blec GroundBreaker

Page 6

TURFMECH TREMOR EARTHQUAKE BLADES

Turfmech Tremor EarthQuake blade

Page 6

VERTI-CORE (plus Rapidcore 1.2m & 1.6m)

Hollow Tine hardened / carbide tipped

Page 7

Cross Tine hardened / carbide tipped/solid tine

Page 8

VERTI-DRAIN

Hollow Tine hardened

Page 9

Hollow Tine carbide tipped

Page 10

Cross Tine hardened

Page 10 - 11

Solid Tine hardened

Page 12

Solid Tine hardened continued flat chisel hardened

Page 13

JOHN DEERE/MULTICORE

Hollow Tine hardened

Page 14

Hollow Tine carbide tipped flat chisel hardened

Page 15

Cross Tine hardened / carbide tipped

Page 16

Solid Tine hardened & Konispoon® round hardened

Page 17

GROUNDSMAN

Hollow Tine hardened

Page 18

Hollow Tine carbide tipped

Page 19

Cross Tine hardened & carbide tipped

Page 20

Solid Tine hardened & Konispoon® needle hardened

Page 21

RANSOMES / JACOBSEN/ RYAN GA30

Hollow Tine hardened	Page 22
Hollow Tine carbide tipped & Flat chisel tine hardened	Page 23
Cross Tine hardened / carbide tipped	Page 24
Solid Tine hardened & Konispoon® needle hardened	Page 25

SOIL RELIEVER/ SELVATICI

Hollow Tine hardened	Page 26
Hollow Tine carbide tipped	Page 27
Cross Tine hardened / carbide tipped / flat chisel hardened	Page 28
Solid Tine hardened	Page 29 - 30

TORO

Hollow Tine hardened	Page 31 - 32
Hollow Tine carbide tipped & Konispoon® needle round hardened	Page 33
Cross Tine hardened & carbide tipped	Page 34
Flat chisel hardened & Solid Tine hardened	Page 35

WIEDENMANN

Hollow Tine hardened	Page 36
Hollow Tine carbide tipped / Terra Rake Replacement Tine	Page 37
Cross Tine hardened / carbide tipped / Konispoon® Flat chisel hardened	Page 38
Solid Tine hardened	Page 39 - 40

BRUSHES

Brush request form	Page 41
Brush Sections – Wessex/Tomlin/Thatchaway	Page 42
Brush Sections – Toro Front mounted greens brushes	Page 43
Brush Sections – Sisis	Page 44

ACCESSORIES

Back-Lapping Paste	Page 45
Accu-Guage – Height of cut setting tool	Page 46
Top Links (incl.Hydraulic) & PTO Shaft Assemblies and Safety guards	Page 47
Replacement Seats	Page 48
TAS Trimmer heads	Page 49

RAYCAM PRODUCTS

Raycam - Sportsfield Harrow / Line Marker	Page 50
Raycam - EasyDrag Rubber Mats	Page 51
Raycam - EasyDrag Accessories / Steel Mats	Page 52
Raycam - V-brush	Page 53
Imants Penetrometer	Page 54

TECHNICAL DATA

Tine Terminology Explained	Page 55
----------------------------	---------

Verticut / Scarifying / Slitting Blades

Amazone – Scarifying Blade

Part No.	Construction	Number of Edges	Working Width	Total Length
8746000	Hardened	1-cut	2 mm	85 mm
8746000H	Carbide Tipped	1-cut	2 mm	85 mm
8356000	Hardened	1-cut	3 mm	85 mm
8356000H	Carbide Tipped	1-cut	3 mm	85 mm

Graden – Scarifying Blade

Part No.	Construction	Number of Edges	Working Width	Ø
1901768H	Carbide Tipped	8-cut	1.5 mm	190 mm
1902467H	Carbide Tipped	8-cut	2 mm	190 mm
1903588H	Carbide Tipped	8-cut	3 mm	190 mm
1901769H	Carbide Tipped	8-cut	1.5 mm	210 mm
1902729H	Carbide Tipped	8-cut	2 mm	210 mm
1903751H	Carbide Tipped	8-cut	3 mm	210 mm

Jacobsen – Green King IV and V - Scarifying Blade

Part No.	Construction	Number of Edges	Working Width	Ø
335449	Hardened	7-cut	0.8 mm	135 mm
1102405H	Carbide Tipped	11-cut	2 mm	135 mm

The length measurements refer to the total length of the tools. Our general Terms and Conditions apply.

Verticut / Scarifying / Slitting Blades

John Deere – Scarifying Blade

Part No.	Construction	Number of Edges	Working Width	Total Length
1102406H Side Wing	Carbide Tipped	11-cut	2 mm	135 mm

Ryan / Mataway – Verticut / Scarifying Blade

Part No.	Construction	Number of Edges	Working Width	Ø
516900	Hardened	2-cut	1.6 mm	185 mm
516898	Hardened	2-cut	3 mm	185 mm
1914291H	Carbide Tipped	5-cut	2 mm	185 mm

Sisis – Scarifying Blade

Part No.	Construction	Number of Edges	Working Width	Ø
2245745 Auto-Rotorake	Hardened	2-cut	2 mm	220 mm
2245745H Auto-Rotorake	Carbide Tipped	2-cut	2 mm	220 mm
3660835H Sisis Rotorake 600	Carbide Tipped	2-cut	1.3 mm	240 mm
3610636H Sisis Rotorake 600	Carbide Tipped	2-cut	2 mm	240 mm
3623137H Sisis Rotorake 600	Carbide Tipped	2-cut	3 mm	240 mm

The length measurements refer to the total length of the tools. Our general Terms and Conditions apply.

Verticut / Scarifying / Slitting Blades

Huxley – Verticut & Slitting Blades

Part No.	Construction	Number of Edges	Working Width	Ø
AGO241	Hardened Slitting Triangle	2	4 mm	300 mm
AGO242H	Hardened Slitting Triangle	2	6 mm	300 mm
4016739	Hardened Verticut	2	2 mm	240 mm
4016739H	Carbide Tipped Verticut	2	2 mm	240mm

Long Equip / Trilo – Scarifying Blade

Part No.	Construction	Number of Edges	Working Width	Total Length
1332726	Hardened	1	3 mm	135 mm
1332726H	Carbide Tipped	1	3.2 mm	135 mm
AG00379 Fan Paddle	Hardened	1	110 mm	115 mm

Toro – Verticut Blade

Part No.	Construction	Number of Edges	Working Width	Ø
1105404H Reel Side Wing	Carbide Tipped	11-cut	2 mm	135 mm

Wiedenmann – Scarifying Blade

Part No.	Construction	Number of Edges	Working Width	Total Length
W3085250	Hardened	1-cut	3 mm	85 mm
W3085250H	Carbide Tipped	1-cut	3 mm	85 mm

The length measurements refer to the total length of the tools. Our general Terms and Conditions apply.

Tine Adaptors

Tine Adaptors

Part No.	Mounting / Outer Ø	Inside Ø	Machine
2351853	24mm	18mm	SELVATICI/SOIL RELIEVER/ VERTIDRAIN
1214032	22.3mm	12mm	TORO/JOHN DEERE
2239270	22.3mm	9.5mm	JOHN DEERE/TORO
2214061	22.3 mm	8 mm	JOHN DEERE/TORO
1214031	19 mm	12 mm	JOHN DEERE/RANSOMES/ RYAN/TORO/MULTICORE/ GROUNDSMAN
1925117	19 mm	9.5 mm	JOHN DEERE/RANSOMES/ RYAN/VERTICORE/TORO/ MULTICORE/GROUNDSMAN
1908248	19 mm	8 mm	JOHN DEERE/RANSOMES/ RYAN/VERTICORE/TORO/ MULTICORE/GROUNDSMAN
1906431	19 mm	6 mm	JOHN DEERE/VERTICORE/ MULTICORE
1812781	18 mm	12 mm	VERTIDRAIN
1209475	12.7 mm	6 mm	RANSOMES/RYAN GROUNDSMAN
W1208067	12 mm	8 mm	WIEDENMANN
1208067	12 mm	8 mm	VERTIDRAIN/SELVATICI/ SOIL RELIEVER
1206456	12 mm	6 mm	VERTIDRAIN/SELVATICI
9506403	9.5 mm	6 mm	SOIL RELIEVER TORO

The length measurements refer to the total length of the tools. Our general Terms and Conditions apply.

Aera-Vator

3 inch Spike Tine

Part No.	Thread Ø	Outside Ø	Total Length	Spike Length
TD50-058	5/8" NF	5/8"	120 mm	3"



The length measurements refer to the total length of the tools. Our general Terms and Conditions apply.

Groundbreaking new additions to Tines Direct



TINES DIRECT

Blec GroundBreaker / Sandmaster blades

Blec GroundBreaker 12mm blade

BL12B0060/12

Blec GroundBreaker 15mm blade

BL12B0060/15

Turfmech Tremor earthquake blades

Turfmech Tremor EarthQuake blade 12mm

T155

Turfmech Tremor EarthQuake blade 20mm

T220

Our general Terms and Conditions apply.

Verti-Core/ Rapidcore

Hollow Tines

Part No.	Mounting Ø	Outside Ø	Total Length	Core Ø
08-9513123 Side Eject	8 mm	9.5 mm	125 mm	5 mm
1008755 Side Eject	8 mm	11 mm	130 mm	6 mm
1912807 Side Eject	19 mm	12 mm	155 mm	6 mm
1912771 Side Eject	19 mm	12.7 mm	125 mm	9 mm
1914415 Side Eject	19 mm	12.7 mm	145 mm	9 mm
1615765 Side Eject	19 mm	16 mm	155 mm	9.5 mm
1912761 Side Eject	19 mm	16 mm	125 mm	12 mm
1914417 Side Eject	19 mm	16 mm	145 mm	12 mm
2015766 Side Eject	19 mm	20 mm	155 mm	13 mm
2514260 Side Eject	19 mm	26 mm	180 mm	16 mm
4019749 Side Eject	19 mm	40 mm	145 mm	30 mm

Hollow Tines with Carbide Tip

Part No.	Mounting Ø	Outside Ø	Total Length	Core Ø
08-9513123H Side Eject	8 mm	11 mm	135 mm	5.5 mm
1912807H Side Eject	19 mm	12 mm	155 mm	6 mm
1615765H Side Eject	19 mm	16 mm	155 mm	9 mm
2015766H Side Eject	19 mm	20 mm	155 mm	12 mm

The length measurements refer to the total length of the tools. Our general Terms and Conditions apply.

Verti-Core/ Rapidcore

Cross Tines

Part No.	Mounting Ø	Outside Ø	Total Length	Rib Width
9510720	9.5 mm	9.5 mm	102 mm	1.5 mm
1916900	19 mm	12 mm	160 mm	2.5 mm
2019457	19 mm	20 mm	140 mm	3.0 mm
2419459	19 mm	24 mm	140 mm	5.0 mm
2619461	19 mm	26 mm	140 mm	5.0 mm

Cross Tines with Carbide Tip

Part No.	Mounting Ø	Outside Ø	Total Length	Rib Width
1214012H	19 mm	12 mm	145 mm	2.5 mm

Solid Tines

Part No.	Mounting Ø	Outside Ø	Total Length
0614402	6 mm	6 mm	140 mm
0815052	8 mm	8 mm	150 mm
1906872	19 mm	6 mm	160 mm
1908873	19 mm	8 mm	160 mm
1910929	19 mm	10 mm	160 mm
1912774	19 mm	12 mm	160 mm
1916785	19 mm	16 mm	160 mm
1919799	19 mm	19 mm	160 mm

The length measurements refer to the total length of the tools. Our general Terms and Conditions apply.

Verti-Drain

Hollow Tines

(All Verti-Drain Hollow tines are Side Eject) Produced from a full steel billet, shatter-proof with long term durability

Part No.	Mounting Ø	Outside Ø	Total Length	Core Ø
1008755	8 mm	11 mm	150 mm	6 mm
1214770	12 mm	12 mm	160 mm	6.5 mm
1618001	12 mm	16 mm	180 mm	9.5 mm
1624001	12 mm	16 mm	225 mm	9.5 mm
2018002	12 mm	20 mm	180 mm	12 mm
2024002	12 mm	20 mm	225 mm	12 mm
2031004	12 mm	20 mm	295 mm	12 mm
2031003	18 mm	20 mm	295 mm	12 mm
2531005	18 mm	26 mm	310 mm	16 mm
2536042	18 mm	26 mm	360 mm	16 mm
2531006	24 mm	26 mm	310 mm	16 mm
3036007	18 mm	30 mm	360 mm	21 mm
3036008	24 mm	30 mm	360 mm	21 mm
3536010	24 mm	35 mm	360 mm	27 mm

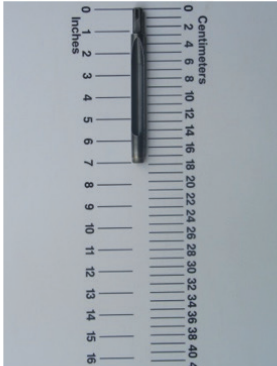
The length measurements refer to the total length of the tools. Our general Terms and Conditions apply.

Verti-Drain

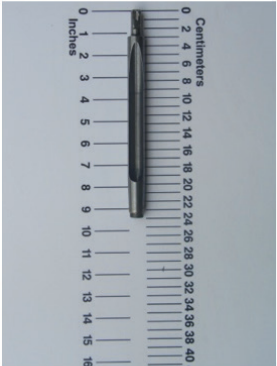
Hollow Tines Carbide Tipped

(All Verti-Drain Hollow tines are Side Eject)

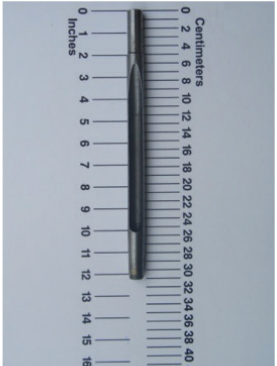
Part No.	Mounting Ø	Outside Ø	Total Length	Core Ø
1618001H	12 mm	16 mm	180 mm	9 mm
1624001H	12 mm	16 mm	225 mm	9 mm
2018002H	12 mm	20 mm	180 mm	12 mm
2024002H	12 mm	20 mm	225 mm	12 mm
2024119H	18 mm	20 mm	225 mm	12 mm
2031004H	12 mm	20 mm	295 mm	12 mm
2031003H	18 mm	20 mm	295 mm	12 mm
2531005H	18 mm	26 mm	310 mm	16 mm
2536042H	18 mm	26 mm	360 mm	16 mm
2531006H	24 mm	26 mm	310 mm	16 mm



1618001H



2024002H



2031003H

The length measurements refer to the total length of the tools. Our general Terms and Conditions apply.

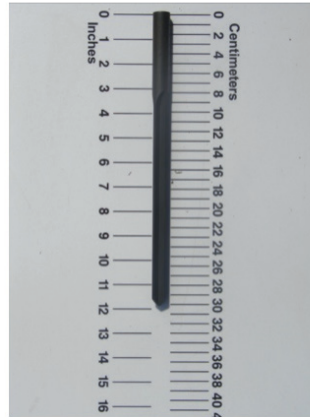
Verti-Drain

Cross Tines

Part No.	Mounting Ø	Outside Ø	Total Length	Core Ø
0820719	8 mm	8 mm	200 mm	1.5 mm
1214012V	12 mm	12 mm	145 mm	2.5 mm
1220244	12 mm	12 mm	200 mm	2.5 mm
1225830	12 mm	12 mm	250 mm	2.5 mm
1218452	12 mm	18 mm	200 mm	3 mm
1832453	18 mm	18 mm	320 mm	3 mm
2235412	18 mm	22 mm	320 mm	5 mm
2432473	18 mm	24 mm	320 mm	5 mm
2532454	24 mm	24 mm	320 mm	5 mm



0820719



1832453

The length measurements refer to the total length of the tools. Our general Terms and Conditions apply.

Verti-Drain

Solid Tines

Part No.	Mounting Ø	Outside Ø	Total Length
0614402	6 mm	6 mm	140 mm
0620455	6 mm	6 mm	175 mm
0817511	8 mm	8 mm	175 mm
0820049	8 mm	8 mm	200 mm
0825064	8 mm	8 mm	250 mm
0830716	8 mm	8 mm	300 mm
1208800	8 mm	12 mm	155 mm
1220055	12 mm	12 mm	200 mm
1225056	12 mm	12 mm	250 mm
1230012	12 mm	12 mm	300 mm
1236013	12 mm	12 mm	360 mm
1612760	12 mm	16 mm	200 mm
1612837	12 mm	16 mm	250 mm
1820823	12 mm	18 mm	200 mm
1825779	12 mm	18 mm	250 mm
1825807	18 mm	18 mm	250 mm

(Solid Tines Hardened continued on next page)

The length measurements refer to the total length of the tools. Our general Terms and Conditions apply.

Verti-Drain

Solid Tines

Part No.	Mounting Ø	Outside Ø	Total Length
1830014	18 mm	18 mm	300 mm
1835015	18 mm	18 mm	350 mm
1840016	18 mm	18 mm	400 mm
1845043	18 mm	18 mm	450 mm
2535018	18 mm	24 mm	350 mm
2535019	24 mm	24 mm	350 mm
2540020	24 mm	24 mm	400 mm
2545021	24 mm	24 mm	450 mm
4520841	24 mm	50 mm	300 mm

Flat / Chisel Tine

Part No.	Mounting Ø	Element Width	Element Thickness	Total Length
W1219844	12 mm	19 mm	6 mm	220 mm

The length measurements refer to the total length of the tools. Our general Terms and Conditions apply.

John Deere/ Multicore

Hollow Tines

Part No.	Mounting Ø	Outside Ø	Total Length	Core Ø
9513123 Side Eject	9.5 mm	9.5 mm	125 mm	5 mm
9514745 Side Eject	9.5 mm	11 mm	145 mm	6 mm
1912807 Side Eject	19 mm	12 mm	155 mm	6 mm
1912130 Top Eject	19 mm	12.7 mm	125 mm	10mm
1912771 Side Eject	19 mm	12.7 mm	125 mm	9 mm
1914132 Top Eject	19 mm	12.7 mm	145 mm	10mm
1914415 Side Eject	19 mm	12.7 mm	145 mm	10mm
1615765 Side Eject	19 mm	16 mm	155 mm	9.5mm
1912761 Side Eject	19 mm	16 mm	125 mm	12mm
1914136 Top Eject	19 mm	16 mm	145 mm	13mm
1914417 Side Eject	19 mm	16 mm	145 mm	12 mm
2015766 Side Eject	19 mm	20 mm	155 mm	13 mm
1916886 Top Eject	19 mm	16 mm	165 mm	13 mm
2514260 Side Eject	19 mm	26 mm	140 mm	16 mm
2514266 Side Eject	22.3 mm	26 mm	140 mm	16 mm

The length measurements refer to the total length of the tools. Our general Terms and Conditions apply.

John Deere/ Multicore

Hollow Tines Carbide Tipped

Part No.	Mounting Ø	Outside Ø	Total Length	Core Ø
9513123H Side Eject	9.5 mm	11 mm	145 mm	5.5 mm
1912807H Side Eject	19 mm	12 mm	155 mm	6 mm
1912131H Top Eject	19 mm	12.7 mm	125 mm	9 mm
1914133H Top Eject	19 mm	12.7 mm	145 mm	9 mm
1914416H Side Eject	19 mm	12.7 mm	145 mm	9 mm
1615765H Side Eject	19 mm	16 mm	155 mm	9 mm
1912135H Top Eject	19 mm	16 mm	125 mm	12 mm
1914137H Top Eject	19 mm	16 mm	145 mm	12 mm
2015766H Side Eject	19 mm	20 mm	155 mm	12 mm

Flat / Chisel Tines

Part No.	Mounting Ø	Element Width	Element Thickness	Total Length
1219841	19 mm	19 mm	6 mm	140 mm
1219842	19 mm	19 mm	6 mm	160 mm

The length measurements refer to the total length of the tools. Our general Terms and Conditions apply.

John Deere/ Multicore

Cross Tines

Part No.	Mounting Ø	Outside Ø	Total Length	Rib Width
9515750	9.5 mm	9.5 mm	140 mm	1.5 mm
9516825	9.5 mm	9.5 mm	160 mm	1.5 mm
9514120	9.5 mm	12 mm	135 mm	2.5 mm
1916900	19 mm	12 mm	160 mm	2.5 mm
2019457	19 mm	20 mm	140 mm	3 mm
2419459	19 mm	24 mm	140 mm	5 mm
2422460	22.3 mm	24 mm	140 mm	5 mm
2619461	19 mm	26 mm	140 mm	5 mm
2622462	22.3 mm	26 mm	140 mm	5 mm

Cross Tines Carbide Tipped

Part No.	Mounting Ø	Outline Ø	Total Length	Rib Width
9514120H	9.5 mm	12 mm	135 mm	2.5 mm
1214012H	19 mm	12 mm	145 mm	2.5 mm

The length measurements refer to the total length of the tools. Our general Terms and Conditions apply.

John Deere/ Multicore

Solid Tines

Part No.	Mounting Ø	Outside Ø	Total Length
0105180	5 mm elbow	5 mm	180 mm
0108180	8 mm elbow	8 mm	180 mm
0614402	6 mm	6 mm	140 mm
0815052	8 mm	8 mm	150 mm
9512450	9.5 mm	9.5 mm	120 mm
9515045	9.5 mm	9.5 mm	150 mm
1906872	19 mm	6 mm	160 mm
1908873	19 mm	8 mm	160 mm
1910929	19 mm	10 mm	160 mm
1912774	19 mm	12 mm	160 mm
1916785	19 mm	16 mm	160 mm
1919799	19 mm	19 mm	160 mm
2231685	22.3 mm	16 mm	140 mm

Konispoon® Round Needle

Part No.	Mounting Ø	Outside Ø	Total Length
9505847K	9.5 mm	5 mm	140 mm
9505846K	9.5 mm	5 mm	160 mm
9506842K	9.5 mm	6 mm	140 mm
9506845K	9.5 mm	6 mm	160 mm

The length measurements refer to the total length of the tools. Our general Terms and Conditions apply.

Groundsman

Hollow Tines

Part No.	Mounting Ø	Outside Ø	Total Length	Core Ø
9513123 Side Eject	9.5 mm	9.5 mm	125 mm	5 mm
1615522 Side Eject	16 mm	16 mm	155 mm	9.4 mm
2015523 Side Eject	16 mm	20 mm	155 mm	12.5 mm
1912807 Side Eject	19 mm	12 mm	155 mm	6 mm
1912130 Top Eject	19 mm	12.7 mm	125 mm	10 mm
1914132 Top Eject	19 mm	12.7 mm	145 mm	10 mm
1912771 Side Eject	19 mm	12.7 mm	125 mm	10 mm
1914415 Side Eject	19 mm	12.7 mm	145 mm	10 mm
1914136 Top Eject	19 mm	16 mm	145 mm	13 mm
1912761 Side Eject	19 mm	16 mm	125 mm	13 mm
1914417 Side Eject	19 mm	16 mm	145 mm	13 mm
1916886 Top Eject	19 mm	16 mm	165 mm	13mm
1916887 Top Eject	19 mm	12.7 mm	165 mm	10mm
2514260 Side Eject	19 mm	26 mm	140 mm	16 mm
2514266 Side Eject	22.3 mm	26 mm	140 mm	16 mm

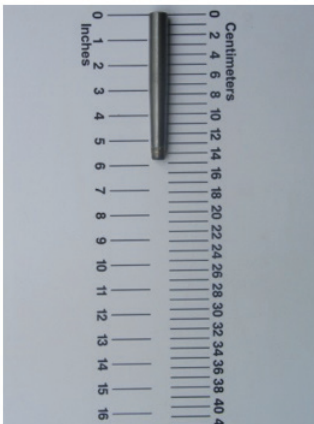
The length measurements refer to the total length of the tools. Our general Terms and Conditions apply.

Groundsman

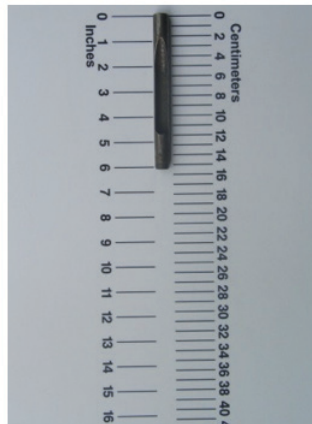
Hollow Tines Carbide Tipped

Part No.	Mounting Ø	Outside Ø	Total Length	Core Ø
9513123H Side Eject	9.5 mm	11 mm	145 mm	5.5 mm
1615522H Side Eject	16 mm	16 mm	155 mm	9.5 mm
2015523H Side Eject	16 mm	20 mm	155 mm	12.5 mm
1912807H Side Eject	19 mm	12 mm	155 mm	6 mm
1912131H Top Eject	19 mm	12.7 mm	125 mm	9 mm
1914133H Top Eject	19 mm	12.7 mm	145 mm	9 mm
1912135H Top Eject	19 mm	16 mm	125 mm	12 mm
1914137H Top Eject	19 mm	16 mm	145 mm	12 mm

The length measurements refer to the total length of the tools. Our general Terms and Conditions apply.



1914133H



1615522H

Groundsman

Cross Tines

Part No.	Mounting Ø	Outside Ø	Total Length	Rib Width
9514120	9.5 mm	12 mm	135 mm	2.5 mm
1274121	12.7 mm	12 mm	140 mm	2.5 mm
2014463	16 mm	20 mm	140 mm	2.5 mm
1916900	19 mm	12 mm	160 mm	2.5 mm
2019457	19 mm	20 mm	140 mm	3 mm
2419459	19 mm	24 mm	140 mm	5 mm
2619461	19 mm	26 mm	140 mm	5 mm

Cross Tines Carbide Tipped

Part No.	Mounting Ø	Outside Ø	Total Length	Rib Width
9514120H	9.5 mm	12 mm	135 mm	2.5 mm
1214012H	19 mm	12 mm	140 mm	2.5 mm
1274121H	12.7 mm	12 mm	140 mm	2.5 mm

The length measurements refer to the total length of the tools. Our general Terms and Conditions apply.

Groundsman

Solid Tines

Part No.	Mounting Ø	Outside Ø	Total Length
0614402	6 mm	6 mm	140 mm
0815052	8 mm	8 mm	150 mm
9512450	9.5 mm	9.5 mm	120 mm
9515045	9.5 mm	9.5 mm	150 mm
1206140	12mm	6 mm	140 mm
1208140	12 mm	8 mm	140 mm
1210140	12 mm	10 mm	140 mm
1906872	19 mm	6 mm	160 mm
1908873	19 mm	8 mm	160 mm
1910929	19 mm	10 mm	160 mm
1912774	19 mm	12 mm	160 mm
1916785	19 mm	16 mm	160 mm
1919799	19 mm	19 mm	160 mm

Konispoon® Round Needle

Part No.	Mounting Ø	Outside Ø	Total Length
9505847K	9.5 mm	5 mm	140
9505846K	9.5 mm	5 mm	160
9506842K	9.5 mm	6 mm	140
9506845K	9.5 mm	6 mm	160

The length measurements refer to the total length of the tools. Our general Terms and Conditions apply.

Ransomes / Jacobsen / Ryan GA30

Hollow Tines

Part No.	Mounting Ø	Outside Ø	Total Length	Core Ø
9513123 Side Eject	9.5 mm	9.5 mm	125 mm	5 mm
9514745 Side Eject	9.5 mm	11 mm	145 mm	6 mm
1912807 Side Eject	19 mm	12 mm	155 mm	6 mm
1612474 Side Eject	16 mm	12.7 mm	125 mm	10 mm
1615522 Side Eject	16 mm	16 mm	155 mm	10 mm
2015523 Side Eject	16 mm	20 mm	155 mm	13 mm
1912130 Top Eject	19 mm	12.7 mm	125 mm	10 mm
1914132 Top Eject	19 mm	12.7 mm	145 mm	10 mm
1914415 Side Eject	19 mm	12.7 mm	145 mm	10 mm
1916887 Top Eject	19 mm	12.7 mm	165 mm	10 mm
1615765 Side Eject	19 mm	16 mm	155 mm	9.5 mm
1914136 Top Eject	19 mm	16 mm	145 mm	13 mm
1914417 Side Eject	19 mm	16 mm	145 mm	12 mm
2015766 Side Eject	19 mm	20 mm	155 mm	13 mm
1916886 Top Eject	19 mm	16 mm	165 mm	13 mm
2514260 Side Eject	19 mm	26 mm	140 mm	16 mm

The length measurements refer to the total length of the tools. Our general Terms and Conditions apply.

Ransomes / Jacobsen / Ryan GA30

Hollow Tines Carbide Tipped

Part No.	Mounting Ø	Outside Ø	Total Length	Core Ø
9513123H Side Eject	9.5 mm	11 mm	145 mm	5.5 mm
2015523H Side Eject	16 mm	20 mm	155 mm	12.5 mm
1912807H Top Eject	19 mm	12 mm	155 mm	6 mm
1912131H Top Eject	19 mm	12.7 mm	125 mm	9 mm
1914133H Top Eject	19 mm	12.7 mm	145 mm	9 mm
1914416H Side Eject	19 mm	12.7 mm	145 mm	9 mm
1615765H Side Eject	19 mm	16 mm	155 mm	9 mm
1912135H Top Eject	19 mm	16 mm	125 mm	12 mm
1914137H Top Eject	19 mm	16 mm	145 mm	12 mm
2014027H Side Eject	19 mm	16 mm	155mm	12 mm
2015766H Side Eject	19 mm	20 mm	155 mm	12 mm

Flat / Chisel Tines

Part No.	Mounting Ø	Element Width	Element Thickness	Total Length
1219841	19 mm	19 mm	6 mm	140 mm
1219842	19 mm	19 mm	6 mm	160 mm

The length measurements refer to the total length of the tools. Our general Terms and Conditions apply.

Ransomes / Jacobsen / Ryan GA30

Cross Tines

Part No.	Mounting Ø	Outside Ø	Total Length	Rib Width
9510720	9.5 mm	9.5 mm	102 mm	1.5 mm
9516825	9.5 mm	9.5 mm	160 mm	1.5 mm
9514120	9.5 mm	12 mm	135 mm	2.5 mm
1916900	19 mm	12 mm	160 mm	2.5 mm
1274121	12.7 mm	12 mm	140 mm	2.5 mm
2014463	16 mm	20 mm	140 mm	3 mm
2019457	19 mm	20 mm	140 mm	3 mm
2419459	19 mm	24 mm	140 mm	5 mm
2619461	19 mm	26 mm	140 mm	5 mm

Cross Tines Carbide Tipped

Part No.	Mounting Ø	Outside Ø	Total Length	Rib Width
9514120H	9.5 mm	12 mm	135 mm	2.5 mm
1214012H	19 mm	12 mm	145 mm	2.5 mm
1274121H	12.7 mm	12 mm	140 mm	2.5 mm

The length measurements refer to the total length of the tools. Our general Terms and Conditions apply.

Ransomes / Jacobsen / Ryan GA30

Solid Tines

Part No.	Mounting Ø	Outside Ø	Total Length
0614402	6 mm	6 mm	140 mm
0815052	8 mm	8 mm	150 mm
9512450	9.5 mm	9.5 mm	120 mm
9515045	9.5 mm	9.5 mm	150 mm
1271796	12.7 mm	8 mm	140 mm
1906872	19 mm	6 mm	160 mm
1908873	19 mm	8 mm	160 mm
1910929	19 mm	10 mm	160 mm
1912774	19 mm	12 mm	160 mm
1916785	19 mm	16 mm	160 mm
1919799	19 mm	19 mm	160 mm

Konispoon® Round Needle

Part No.	Mounting Ø	Outside Ø	Total Length
9505847K	9.5mm	5mm	140mm
9505846K	9.5mm	5mm	160mm
9506842K	9.5mm	6mm	140mm
9506845K	9.5mm	6mm	160mm

The length measurements refer to the total length of the tools. Our general Terms and Conditions apply.

Soil Reliever/ Selvatici

Hollow Tines

(All Soil Reliever/Selvatici Hollow tines are Side Eject)

Produced from a full steel billet, shatter-proof with long term durability

Part No.	Mounting Ø	Outside Ø	Total Length	Core Ø
1008755	8 mm	11 mm	150 mm	6 mm
1214770	12 mm	12 mm	160 mm	6.5 mm
1618001	12 mm	16 mm	180 mm	9.5 mm
1624001	12 mm	16 mm	225 mm	9.5 mm
2018002	12 mm	20 mm	180 mm	12 mm
2024002	12 mm	20 mm	225 mm	12 mm
2031004	12 mm	20 mm	295 mm	12 mm
2031003	18 mm	20 mm	295 mm	12 mm
2531005	18 mm	26 mm	310 mm	16 mm
2536042	18 mm	26 mm	360 mm	16 mm
2531006	24 mm	26 mm	310 mm	16 mm
3036007	18 mm	30 mm	360 mm	21 mm
3036008	24 mm	30 mm	360 mm	21 mm
3536010	24 mm	35 mm	360 mm	27 mm

The length measurements refer to the total length of the tools. Our general Terms and Conditions apply.

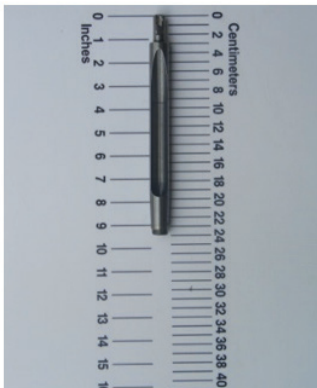
Soil Reliever/ Selvatici

Hollow Tines Carbide Tipped

*(All Soil Reliever/Selvatici Hollow tines are Side Eject)
Produced from a full steel billet, shatter-proof with long term durability*

Part No.	Mounting Ø	Outside Ø	Total Length	Core Ø
1618001H	12 mm	16 mm	180 mm	9 mm
1624001H	12 mm	16 mm	225 mm	9 mm
2018002H	12 mm	20 mm	180 mm	12 mm
2024002H	12 mm	20 mm	225 mm	12 mm
2024119H	18 mm	20 mm	225 mm	12 mm
2031004H	12 mm	20 mm	295 mm	12 mm
2031003H	18 mm	20 mm	295 mm	12 mm
2531005H	18 mm	26 mm	310 mm	16 mm
2536042H	18 mm	26 mm	360 mm	16 mm
2531006H	24 mm	26 mm	310 mm	16 mm

The length measurements refer to the total length of the tools. Our general Terms and Conditions apply.



2024002H



2024119H

Soil Reliever/ Selvatici

Cross Tines

Part No.	Mounting Ø	Outside Ø	Total Length	Rib Width
0820719	8 mm	8 mm	200 mm	1.5 mm
1214012V	12 mm	12 mm	145 mm	2.5 mm
1220244	12 mm	12 mm	200 mm	2.5 mm
1225830	12 mm	12 mm	250 mm	2.5 mm
1218452	12 mm	18 mm	200 mm	3 mm
1832453	18 mm	18 mm	320 mm	3 mm
2235412	18 mm	22 mm	320 mm	5 mm
2432473	18 mm	24 mm	320 mm	5 mm
2532454	24 mm	24 mm	320 mm	5 mm

Cross Tines Carbide Tipped

Part No.	Mounting Ø	Outside Ø	Total Length	Rib Width
1220244H	12 mm	12 mm	200 mm	2.5 mm

Flat / Chisel Tine

Part No.	Mounting Ø	Element Width	Element Thickness	Total Length
W1219844	12 mm	19 mm	6 mm	220 mm

The length measurements refer to the total length of the tools. Our general Terms and Conditions apply.

Soil Reliever/ Selvatici

Solid Tines

Part No.	Mounting Ø	Outside Ø	Total Length
10614402	6mm	6 mm	140 mm
0620455	6 mm	6 mm	175 mm
0817511	8 mm	8 mm	175 mm
0820049	8 mm	8 mm	200 mm
0825064	8 mm	8 mm	250 mm
0830716	8 mm	8 mm	300 mm
1208800	8 mm	12 mm	155 mm
1220055	12 mm	12 mm	200 mm
1225056	12 mm	12 mm	250 mm
1230012	12 mm	12 mm	300 mm
1236013	12 mm	12 mm	360 mm
1612760	12 mm	16 mm	200 mm
1612837	12 mm	16 mm	250 mm
1825779	12 mm	18 mm	250 mm

(Solid Tines Hardened continued on next page)

The length measurements refer to the total length of the tools. Our general Terms and Conditions apply.

Soil Reliever/ Selvatici

Solid Tines

Part No.	Mounting Ø	Outside Ø	Total Length
1825807	18 mm	18 mm	250 mm
1830014	18 mm	18 mm	300 mm
1835015	18 mm	18 mm	350 mm
1840016	18 mm	18 mm	400 mm
1845043	18 mm	18 mm	450 mm
2235105	18 mm	22 mm	350 mm
2535018	18 mm	24 mm	350 mm
2240803	22 mm	22 mm	400 mm
2535019	24 mm	24 mm	350 mm
2540020	24 mm	24 mm	400 mm
2545021	24 mm	24 mm	450 mm

The length measurements refer to the total length of the tools. Our general Terms and Conditions apply.

Hollow Tines

Part No.	Mounting Ø	Outside Ø	Total Length	Core Ø
9513123 Side Eject	9.5 mm	9.5 mm	125 mm	5 mm
9514745 Side Eject	9.5 mm	11 mm	145 mm	6 mm
1912807 Side Eject	19 mm	12 mm	155 mm	6 mm
1912130 Top Eject	19 mm	12.7 mm	125 mm	10 mm
1912771 Side Eject	19 mm	12.7 mm	125 mm	9 mm
1914132 Top Eject	19 mm	12.7 mm	145 mm	10 mm
1914415 Side Eject	19 mm	12.7 mm	145 mm	10 mm
1916887 Top Eject	19 mm	12.7 mm	165 mm	10 mm
1615765 Side Eject	19 mm	16 mm	155 mm	9.5 mm
1912761 Side Eject	19 mm	16 mm	125 mm	12 mm
1914136 Top Eject	19 mm	16 mm	145 mm	13 mm

(Hollow Tines Hardened continued on next page)

The length measurements refer to the total length of the tools. Our general Terms and Conditions apply.

Hollow Tines

Part No.	Mounting Ø	Outside Ø	Total Length	Core Ø
1914417 Side Eject	19 mm	16 mm	145 mm	12 mm
2015766 Side Eject	19 mm	20 mm	155 mm	13 mm
1916886 Top Eject	19 mm	16 mm	165 mm	13 mm
2514260 Side Eject	19 mm	26 mm	140 mm	16 mm
2514266 Side Eject	22.3 mm	26 mm	140 mm	16 mm

The length measurements refer to the total length of the tools. Our general Terms and Conditions apply.



2514260



1914417

Toro

Hollow Tines Carbide Tipped

Part No.	Mounting Ø	Outside Ø	Total Length	Core Ø
9513123H Side Eject	9.5 mm	11 mm	145 mm	5.5 mm
1912807H Side Eject	19 mm	12 mm	155 mm	6 mm
1912131H Top Eject	19 mm	12.7 mm	125 mm	9 mm
1914133H Top Eject	19 mm	12.7 mm	145 mm	9 mm
1914416H Side Eject	19 mm	12.7 mm	145 mm	9 mm
1615765H Side Eject	19 mm	16 mm	155 mm	9 mm
1912135H Top Eject	19 mm	16 mm	125 mm	12 mm
1914137H Top Eject	19 mm	16 mm	145 mm	12 mm
2014027H Side Eject	19 mm	16 mm	145 mm	12 mm
2015766H Side Eject	19 mm	20 mm	155 mm	12 mm

Konispoon® Round Needle

Part No.	Mounting Ø	Outside Ø	Total Length
9505847K	9.5mm	5mm	140mm
9505846K	9.5mm	5mm	160mm
9506842K	9.5mm	6mm	140mm
9506845K	9.5mm	6mm	160mm

The length measurements refer to the total length of the tools. Our general Terms and Conditions apply.

Toro

Cross Tines

Part No.	Mounting Ø	Outside Ø	Total Length	Rib Width
9510720	9.5 mm	9.5 mm	102 mm	1.5 mm
9516825	9.5 mm	9.5 mm	160 mm	1.5 mm
9514120	9.5 mm	12 mm	135 mm	2.5 mm
1916900	19 mm	12 mm	160 mm	2.5 mm
2019457	19 mm	20 mm	140 mm	3 mm
2419459	19 mm	24 mm	140 mm	5 mm
2619461	19 mm	26 mm	140 mm	5 mm
2422460	22.3 mm	24 mm	140 mm	5 mm
2622462	22.3 mm	26 mm	140 mm	5 mm

Cross Tines Carbide Tipped

Part No.	Mounting Ø	Outside Ø	Total Length	Rib Width
9514120H	9.5 mm	12 mm	135 mm	2.5 mm
1214012H	19 mm	12 mm	145 mm	2.5mm
1274121H	12.7 mm	12 mm	140 mm	2.5 mm

The length measurements refer to the total length of the tools. Our general Terms and Conditions apply.

Flat / Chisel Tine

Part No.	Mounting Ø	Element Width	Element Thickness	Total Length
1219841	19 mm	19 mm	6 mm	140 mm
1219842	19 mm	19 mm	6 mm	160 mm

Solid Tines

Part No.	Mounting Ø	Outside Ø	Total Length
0105180	5 mm elbow	5 mm	180 mm
0108180	8 mm elbow	8 mm	180 mm
0614402	6 mm	6 mm	140 mm
0815052	8 mm	8 mm	150 mm
9512450	9.5 mm	9.5 mm	120 mm
9515045	9.5 mm	9.5 mm	150 mm
1906872	19 mm	6 mm	160 mm
1908873	19 mm	8 mm	160 mm
1910929	19 mm	10 mm	160 mm
1912774	19 mm	12 mm	160 mm
1916785	19 mm	16 mm	160 mm
1919799	19 mm	19 mm	160 mm
2231685	22.3 mm	16 mm	140 mm

The length measurements refer to the total length of the tools. Our general Terms and Conditions apply.

Wiedemann

Hollow Tines

(All Wiedemann tines are Side Eject)

Produced from a full steel billet, shatter-proof with long durability. Standard Taper 3° or Taper 7° for GXI

Part No.	Mounting Ø	Outside Ø	Total Length	Core Ø
W1008755	8 mm	11 mm	150 mm	6 mm
W1214770	12 mm	12 mm	160 mm	6.5 mm
W1618001	12 mm	16 mm	180 mm	9.5 mm
W1624001	12 mm	16 mm	225 mm	9.5 mm
W2018002	12 mm	20 mm	180 mm	12 mm
W2024002	12 mm	20 mm	225 mm	12 mm
W2031004	12 mm	20 mm	295 mm	12 mm
W2031461	Taper 3°	20 mm	295 mm	12 mm
W2522819	Taper 3°	26 mm	250 mm	16 mm
W2536042	Taper 3°	26 mm	360 mm	16 mm
W3025822	Taper 3°	30 mm	250 mm	21 mm
W3030385	Taper 3°	30 mm	360 mm	21 mm
W3530386	Taper 3°	35 mm	360 mm	27 mm
W2031901	Taper 7°	20 mm	295 mm	12 mm

The length measurements refer to the total length of the tools. Our general Terms and Conditions apply.

Wiedenmann

Hollow Tines Carbide Tipped

Part No.	Mounting Ø	Outside Ø	Total Length	Core Ø
W1618001H	12 mm	16 mm	180 mm	9 mm
W1624001H	12 mm	16 mm	225 mm	9 mm
W2018002H	12 mm	20 mm	180 mm	12 mm
W2024002H	12 mm	20 mm	225 mm	12 mm
W2031004H	12 mm	20 mm	295 mm	12 mm
W2031461H	Taper 3°	20 mm	295 mm	12 mm
W2524068H	Taper 3°	26 mm	310 mm	18 mm

Terra Rake Replacement Tine

Part No.	Mounting Ø	Outside Ø	Total Length	Core Ø
W1196554	4.6 mm	41 mm	260 mm	65 mm

The length measurements refer to the total length of the tools. Our general Terms and Conditions apply.



Wiedemann

Cross Tines

Part No.	Mounting Ø	Outside Ø	Total Length	Rib Width
W0820719	8 mm	8 mm	200 mm	1.5 mm
W1916900	12 mm	12 mm	145 mm	2.5 mm
W1220244	12 mm	12 mm	200 mm	2.5 mm
W1225813	12 mm	12 mm	250 mm	2.5 mm
W1218452	12 mm	18 mm	200 mm	3 mm
W1832453	Taper 3°	18 mm	320 mm	3 mm
W2235413	Taper 3°	22 mm	320 mm	5 mm
W2532454	Taper 3°	24 mm	320 mm	5 mm

Cross Tines Carbide Tipped

Part No.	Mounting Ø	Outside Ø	Total Length	Rib Width
W1220244H	12 mm	12 mm	200 mm	2.5 mm

Flat / Chisel Tine

Part No.	Mounting Ø	Outside Ø	Total Length	Rib Width
W1219844	12 mm	19 mm	220 mm	6 mm

The length measurements refer to the total length of the tools. Our general Terms and Conditions apply.

Wiedenmann

Solid Tines

Part No.	Mounting Ø	Outside Ø	Total Length
W0817511	8 mm	8 mm	175 mm
W0820049	8 mm	8 mm	200 mm
W0825064	8 mm	8 mm	250 mm
W0830716	8 mm	8 mm	300 mm
W1208844	12 mm	8 mm	200 mm
W1201044	12 mm	10 mm	200 mm
W1208848	12 mm	8 mm	300 mm
W1210747	12 mm	10 mm	300 mm
W1220055	12 mm	12 mm	200 mm
W1225056	12 mm	12 mm	250 mm
W1230012	12 mm	12 mm	300 mm
W1236013	12 mm	12 mm	360 mm
W1612760	12 mm	16 mm	200 mm
W1612837	12 mm	16 mm	250 mm
W1820823	12 mm	18 mm	200 mm
W1825836	12 mm	18 mm	250 mm

The length measurements refer to the total length of the tools. Our general Terms and Conditions apply.

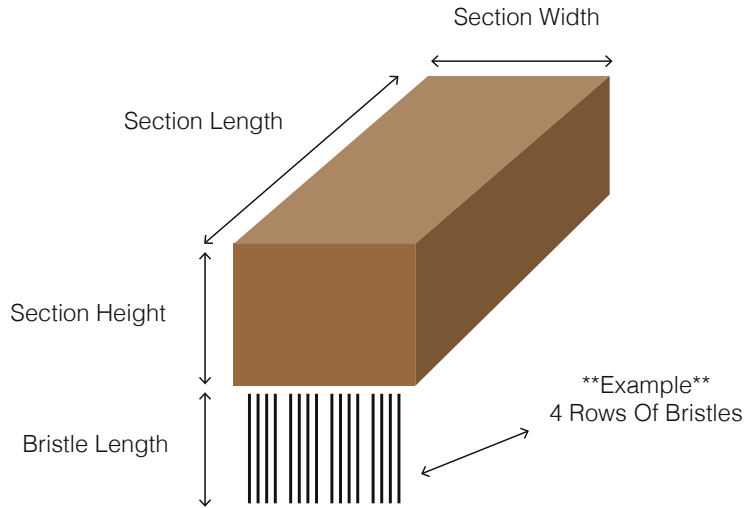
Wiedenmann

Solid Tines - Standard Taper 3° Or Taper 7° for GXI

Part No.	Mounting Ø	Outside Ø	Total Length
W1830770	Taper 3°	18 mm	300 mm
W1827103	Taper 3°	18 mm	350 mm
W2025727	Taper 3°	20 mm	300 mm
W2035716	Taper 3°	20 mm	350 mm
W2042717	Taper 3°	20 mm	420 mm
W2225821	Taper 3°	22 mm	300 mm
W2235126	Taper 3°	22 mm	350 mm
W2242407	Taper 3°	22 mm	420 mm
W2525820	Taper 3°	24 mm	300 mm
W2535018	Taper 3°	24 mm	350 mm
W2440751	Taper 3°	24 mm	420 mm
W1830840	Taper 7°	18 mm	300 mm
W2030876	Taper 7°	20 mm	300 mm
W2230889	Taper 7°	22 mm	300 mm

The length measurements refer to the total length of the tools. Our general Terms and Conditions apply.

Brushes



Custom Brushes Request Form

Please complete details below & email a scan or photo to info@centaur-asiapacific.com

NAME

CONTACT No

MACHINE MANUFACTURER

MACHINE MODEL

PLAYING SURFACE BRUSH TO BE USED ON
(E.G. BOWLING GREEN)

QUANTITY OF BRUSHES REQUIRED

BRUSH SECTION MATERIAL
(E.G. PLASTIC/WOOD)

LENGTH OF SECTION (mm)

WIDTH OF SECTION (mm)

HEIGHT OF SECTION (mm)

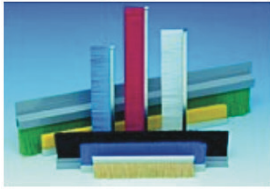
BRISTLE LENGTH (mm)

BRISTLE COLOUR

BRISTLE THICKNESS (mm)

NUMBER OF BRISTLE ROWS

Brushes - Replacement Brush Sections



Thatchaway - (Greentek) (Replacement brush only, shaft not included)

Part No.	Dimensions	Description
TD55547R	55.5cm x 1 ½"	Rotary Brush, Regular Bristle (Black)
TD55547F	55.5cm x 1 ½"	Rotary Brush, Firm Bristle (Blue)

Wessex - SC12 4ft Sweeper Collector

Part No.	Dimensions	Description
TD2870	60cm x 190 mm	Brush section, white/black
TD7570	60cm x 190 mm	Brush section, yellow

Tomlin - RC120/RC180 Sweeper Collector

Part No.	Dimensions	Description
TDRC120R	600 mm x 190 mm	RC120 Section (BLACK) REGULAR
TDRC120F	600 mm x 190 mm	RC120 Section (YELLOW) FIRM
TDRC180R	1800 mm x 190mm	RC180 Section (BLACK) REGULAR
TDRC180F	1800 mm x 190 mm	RC180 Section (YELLOW) FIRM

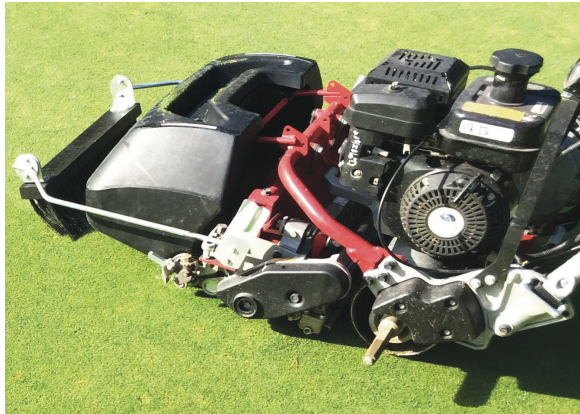
The length measurements refer to the total length of the tools. Our general Terms and Conditions apply.

Brushes - Replacement Brush Sections

Toro Front mounted greens brushes

Also suitable for other greens mowers

Part No.	Dimensions	Description
TDGB51	51 cm	Replacement brush only
TDGB54	54 cm	Replacement brush only
TDGB66	66 cm	Replacement brush only



Brushes

Sisis - Auto / Trio Rotorrake, Litamisa, Litamina, Quadraplay

Part No.	Dimensions	Description
TD1520	2ft X 135mm	Quadraplay, 2ft Brush section
TD1520 H	2ft X 135mm	Quadraplay, 2ft Brush section. Heavy Duty Yellow
TD35377	18.5" x 80mm	Auto/Trio rotorake Mk4, Helical Brush
TD33872	-	Auto Rotorake Mk5, Helical Brush
TDF35919	18.5" x 80mm	Auto Rotorake Mk4 synthetic Surface
TD35377C	18.5" x 80mm	ARR Mk4 - Complete Brush Assy inc. Shaft & bearings
TDF36271	-	Rotorake 600 Helical Brush
TDF33872	-	Rotorake 500 Helical Brush
TD3623	35" x 190mm	Litamisa, 3ft Brush section (old style-6ft)
TD31836	3ft x 170 mm	Litamisa, Helical Brush LH (high lift 6ft)
TD31835	3ft x 170mm	Litamisa, Helical Brush RH (high lift 6ft)
TDF31023	6ft	Brush Strip Litamisa (FRONT 6ft)
TD31604	2ft x 170 mm	Litamina, Helical Brush RH (4ft)
TD31605	2ft x 170mm	Litamina, Helical Brush LH (4ft)
TDDF31038	4ft	Brush Strip Litamina (FRONT 4ft)
TD36698	750 x 170m	Litamina, 1500 LH Helical Brush
TD36699	750 x 170m	Litamina, 1500 RH Helical Brush
TDF36729	1500	Brush Strip Litamina 1500 (FRONT)
TDF31394	996mm	Top Spread Rotary Brush
TDD6744	1280mm	Powaspread Rotary Brush
TDF32970	840mm	Auto Spread Rotary Brush
TDF31346	6ft	Drag Brush Manual Type Medium
TDF31347	6ft	Drag Brush Manual Type Stiff

The length measurements refer to the total length of the tools. Our general Terms and Conditions apply.

Accessories & Equipment



Back-Lapping Paste

Part. No.	Grade	Weight
TD2500EC	30/60 - Extra Course	2.5Kg
TD5000EC	30/60 - Extra Course	5Kg
TD2500C	80 - Course	2.5Kg
TD5000C	80 - Course	5Kg
TD2500M	120 - Medium	2.5Kg
TD5000M	120 - Medium	5Kg
TD2500F	220 - Fine	2.5Kg
TD5000F	220 - Fine	5Kg

This is a Market Leading product. Not only does it offer outstanding quick results but as it's water based it creates less impact to the environment, I would recommend to any Sportsturf or Greenkeeping professional

Andrew Beard of Sportsturf Machinery Services, with over 22 years service in both the service and sales side of the industry

The length measurements refer to the total length of the tools. Our general Terms and Conditions apply.

Accessories & Equipment

Digital Accu-Guage

The preferred height of cut setting tool for the professional groundsman & greenkeeper

Tines Direct Are Pleased To Offer Our Bespoke Specification As Follows:

- 18" Bar length - Most popular size to suit Greens, Tees and Outfield cutting units
- Digital - For Ease of Reading & Setting
- Metric Nomination - For UK & Europe
- Aluminium Carry Case - Protection for your Gauge, with Die Cut Foam For Perfect Fit



Hands free option also available

Accessories & Equipment

Top Link Assemblies

Large selection of linkage pins and accessories available from stock

Part. No.	Category	Description
TDLK1000	1 & 1	Top Link Assy. Min.L.555mm, Max.L.755mm
TDLK1003	1 & 1	Top Link Assy. Min.L.620mm, Max.L.825mm
TDLK1004	1 & 2	Top Link Assy. Min.L.630mm, Max.L.830mm
TDLK1056	1 & 1	Top Link Assy. Min.L.485mm, Max.L.685mm
TDFM3004	1 & 1	Hyd Top Link. Min.L.470mm, Max.L.680mm supplied complete with Hose Kit & ½" Male Couplings
TDFM3006	2 & 2	Hyd Top Link. Min.L.620mm, Max.L.880mm supplied complete with Hose Kit & ½" Male Couplings

PTO Shafts Complete

*** Other PTO Shafts are available to order, please ask for further details.*

Part. No.	PTO Series	HP @ PTO	Description
TDPTO1000	2	20	Series 2 PTO Shaft, Overall length 860 mm
TDPTO1003	4	31	Series 4 PTO Shaft, Overall length 860 mm
TDPTO1005	5	63	Series 5 PTO Shaft, Overall length 860 mm

PTO Safety Guard

*** Other PTO Guards are available to order, please ask for further details.*

PTO Safety Cover

TDPTO1500	PTO Guard to suit TDPTO1000, includes guard retainer TDPTO 1603
TDPTO1502	PTO Guard to suit TDPTO1003, includes guard retainer TDPTO 1604
TDPTO1504	PTO Guard to suit TDPTO1005, includes guard retainer TDPTO 1606

The length measurements refer to the total length of the tools. Our general Terms and Conditions apply.

Accessories & Equipment

Replacement Seats

All seats have a weather proof finish with a superior filling for comfort. They are backed with a hard black plastic skeleton for longevity, with an integral hole for operators Presence Device and multiple mounting holes as illustrated.

KAB P2 SEAT

Colour option

E.g. Small Triple Cylinder Mower or
Small Rotary Ride on Mower

XB180 MEDIUM BACK SEAT

Colour option

E.g. Workman or Gator

XB200 HIGH BACK SEAT

Colour option

E.g. Jacobsen, Toro or John Deere

XBSWITCH OPERATOR

Presence Switch



Accessories & Equipment

Tas Trimmer



The TAS Trimmer blade mounts on any straight shaft trimmer. Once installed, the TAS Trimmer is ready to trim grass away from sprinkler heads, valve boxes, yardage markers and tee markers in a flash. The amount of time and energy saved is so great that it's nearly immeasurable. The TAS Trimmer is the #1 choice of landscape & golf course irrigation professionals.

Fitment

The TAS Trimmer fits any straight shaft trimmer on the market and mounts like a brush cutter attachment. Simply remove the original trimmer head and attach the TAS Trimmer using the brush cutter adapter kit for your make and model.

**ECHO brand trimmers will need the 20mm bushing - supplied with your TAS Trimmer.*

**Bent shaft trimmers are NOT approved for use with the TAS Trimmer*

Part. No.	Size
TAS375	3.75" inch
TAS45	4.5" inch
TAS55	5.5" inch
TAS7	7" inch
TAS75	7.5" inch
TAS775	7.75" inch
TAS8	8" inch
TAS85	8.5" inch
TAS10	10" inch

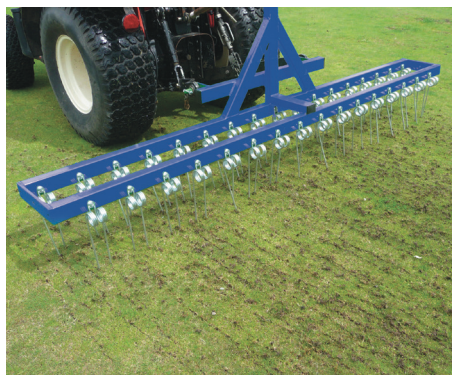
Compatible with all irrigation systems including Rainbird, Hunter, Toro, Buckner, Bear, R.L. Nelson, K-Rain, Legacy, John Deere and Weathermatic.

RAYCAM™

Sportsfield Harrow

Tractor mounted grooming harrow

The Raycam Sportsfield Harrow is a tractor mounted implement for aggressive surface grooming. It can be used on turf, for standing prone grasses, dragging out dead or dying organic matter, or creating a tilt prior to seeding. The Sports field Harrow also has an application for grooming on hard porous surfaces, and is also ideal for gravel paths, where regular use will prevent the accumulation of moss & algae. This 3-point linkage model can be mounted on all compact tractors of around 25hp and above.



Sportsfield Harrow & Replacement Spring Tine

Part. No.	Size
N4947	2.5m wide Tine Spacing 50 mm 3-pt linkage mounted sportsfield harrow

Tine Part No.	Wire Ø	Coil Ø	Total Length	Width
FP0000089	6 MM	53 MM	295 MM	60 MM

Liquid Transfer Marker – LM3010 / LM3012

The Raycam LM3010 and LM3012 are simple, durable & easy to operate liquid transfer line markers. Marking material is transferred from the 30ltr hopper to the 10cm wide marking wheel by a grooved rubber roller, giving even, accurate lines. Features adjustable, tubular steel handles, pneumatic tyres, adjustable flow rate. Front roller allows marking up to post or flag. Recommended marking materials include propriety marking paints, emulsion paint etc. Always check marking materials comply with H.S.E guidelines for sports field use.



Part No.	Size	Description
N4946	30 litre capacity, 10cm marking wheel	Liquid transfer marker
N5250	30 litre capacity, 12cm marking wheel	Liquid transfer marker

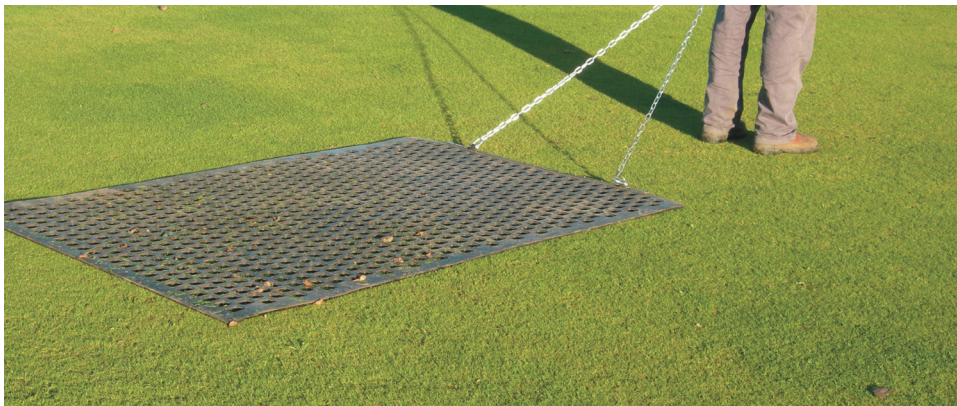
RAYCAM™

A Range of rubber or steel dragmats for dispersal of top dressing

Raycam Easy Drag Dragmats come in a variety of different sizes, and are available in heavy-duty reinforced rubber or steel construction. Dragmats are ideal for rubbing-in top dressings, dew and clippings dispersal. Small mats can be hand-pulled, while the wider units are more suited to towing or mounting on the optional 3-point frame. Available in 4 different widths, and 2 different thicknesses (rubber) for a variety of different handling applications and tasks.

Raycam Easy Drag Rubber Dragmats – 12mm thick

Part No.	Size	Description
N2158	1.2m wide x 1.8m deep	Raycam Easy Drag Rubber Dragmats – 12mm thick
N2159	1.8m wide x 1.8m deep	Raycam Easy Drag Rubber Dragmats – 12mm thick
N2160	2.4m wide x 1.8m deep	Raycam Easy Drag Rubber Dragmats – 12mm thick
N2161	3.0m wide x 1.8m deep	Raycam Easy Drag Rubber Dragmats – 12mm thick



Raycam Heavy- Duty Rubber Dragmats – 20mm thick

Part No.	Size	Description
N2697	1.2m wide x 1.8m deep	Raycam Easy Drag Rubber Dragmat – 20mm thick
N2542	1.8m wide x 1.8m deep	Raycam Easy Drag Rubber Dragmat – 20mm thick
N2543	2.4m wide x 1.8m deep	Raycam Easy Drag Rubber Dragmat – 20mm thick
N2544	3.0m wide x 1.8m deep	Raycam Easy Drag Rubber Dragmat – 20mm thick

RAYCAM™

Raycam EasyDrag

Easy-Drag Optional Accessories

Description
3-Point Linkage Frame
Handle bar



Standard Steel Dragmats – 12mm thick

Part No.	Size	Description
N3369	0.9m wide x 1.2m deep	Standard Steel Dragmat – 12mm thick
N2407	1.8m wide x 1.2m deep	Standard Steel Dragmat – 12mm thick
N2405	1.8m wide x 1.8m deep	Standard Steel Dragmat – 12mm thick
N2406	2.4m wide x 1.2m deep	Standard Steel Dragmat – 12mm thick

RAYCAM™

Raycam V-Brush

Tractor mounted triple V-Brush for natural & synthetic turf

The Raycam Triple V-Brush is a tractor mounted implement for brushing in top-dressing removing worm casts, standing up grass prior to mowing and general presentation on natural turf. The V-Brush is also suitable for use on sand-filled and 3-G synthetic pitches for taking out scuffs & foot prints, re-distributing infill and promoting a vertical sward. The reversible mounting frame enables the V-Brush to be mounted on the rear or front linkage on tractors of 18hp and above. Individual brush sections can easily be replaced when worn.



Raycam V-Brush

Part No.	Specification	Description
N3903	Working Width 1.8m Weight 120kg Power requirement 18hp	Tractor Mounted Triple V-Brush for natural & Synthetic Turf

Replacement Brushes

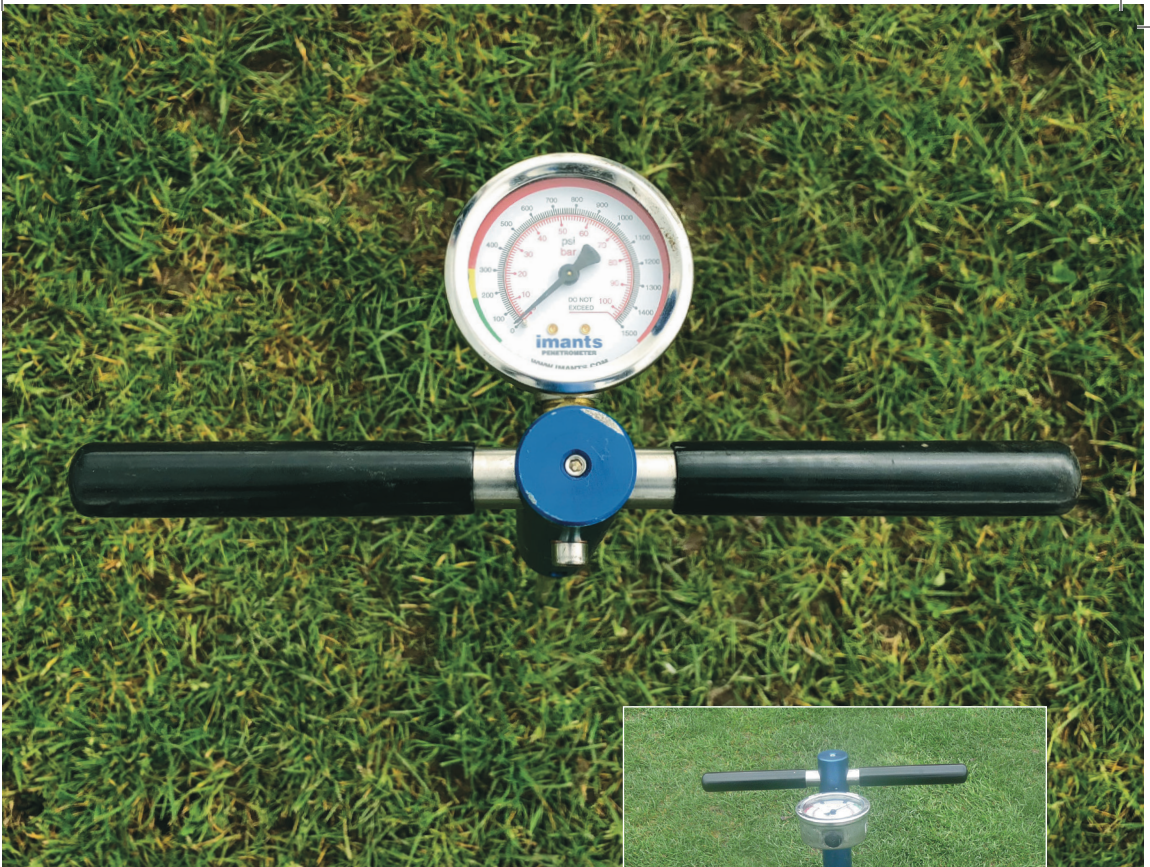
Complete Set of Replacement Brush Sections

Complete Set of Yellow Stiff for Synthetic

Any questions or queries relating to the RAYCAM™ product range?

Please feel free to contact a member of our experienced sales team.





IMANTS Penetrometer

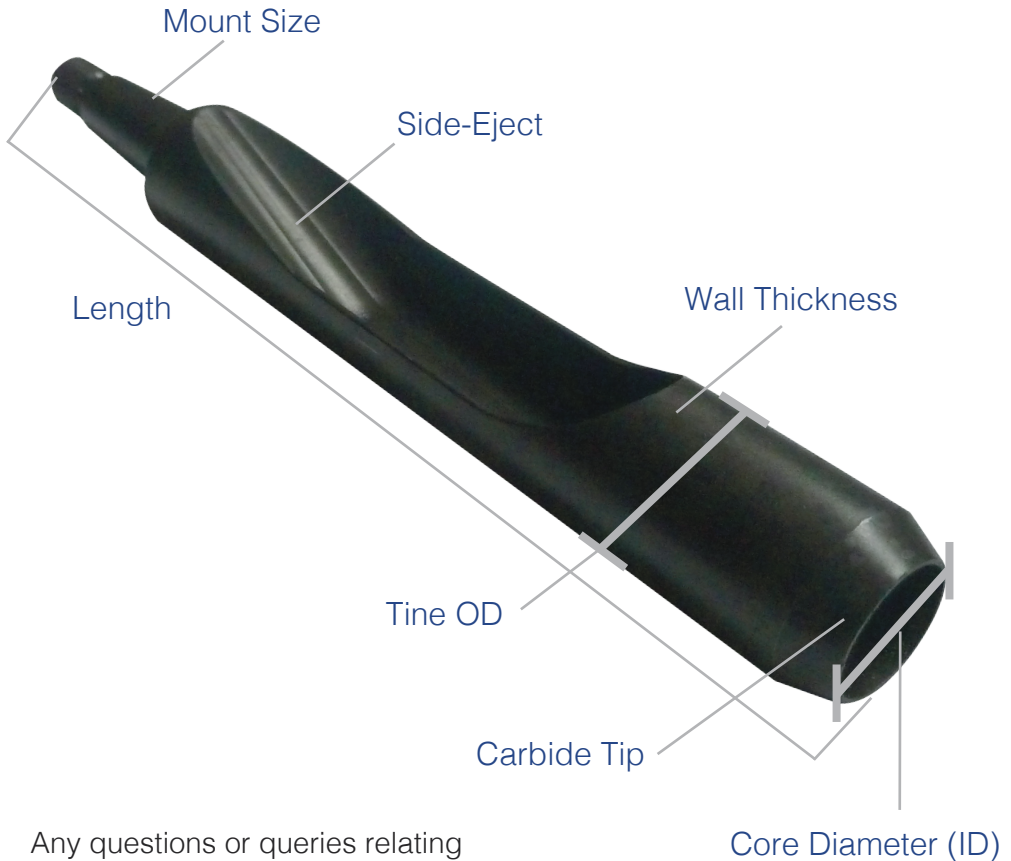
Hand operated professional compaction meter

The Imants penetrometer is a hand held, professional compaction meter to locate and monitor the compaction levels in the soil / root-zone. Understanding the degree of compaction enables the right procedures to be taken to eliminate excessive levels. Lack of air in compacted soil is a major problem, as the roots need access to oxygen to survive. As a rule of thumb, compaction greater than 20 bar pressure (285 psi) will cause problems and action should be taken to relieve the compaction in the rootzone.



Part. No.	Description
IM005038	Hand Operated Professional compaction meter

Tine Terminology Explained



Any questions or queries relating to any of our products range?

Please feel free to contact a member of our experienced sales team.



A division of
Richard Campey Ltd

Marton, Macclesfield, Cheshire, SK11 9HG United Kingdom

Distributed by:



Hong Kong | Singapore | Malaysia | Australia

Email: info@centaur-asiapacific.com

Website: www.centaur-asiapacific.com



Replacement Tines for Charterhouse Vertidrain, Weidenmann Terraspikes, Ryan, Toro, John Deere, & Groundsman Corers and many more! Thatchaway, Graden & Sisis Scarifiers. Replacement brushes for Sisis, Thatchaway, Tomlin & Wessex Sweepers. Specialists in Carbide Tipped Tines.