

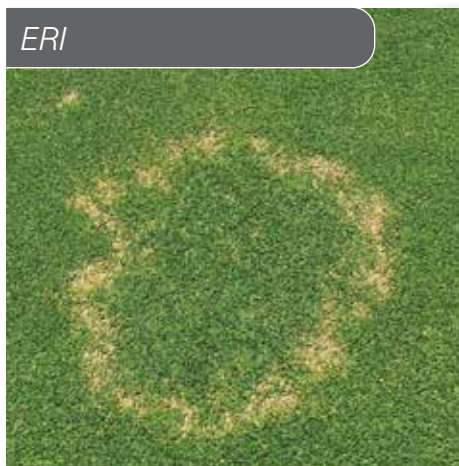


Tombstone Duo

Fungicide

*Strong disease protection
in all weather conditions*

ERI



Product Overview

Tombstone Duo is a broad spectrum fungicide containing the active ingredients Trifloxystrobin (100g/L) and Tebuconazole (200g/L)

It is registered for the control of Anthracnose, Brown Patch, Winter Fusarium, Helminthosporium diseases (including White Helmo), Leptosphaerulina, Curvularia, Dollar Spot and ERI (Ectotrophic Root Infecting Fungi) diseases

Tombstone Duo is an SC formulation and is manufactured in Australia

Tombstone Duo is available in both 500mL and 1L pack sizes

Curvularia



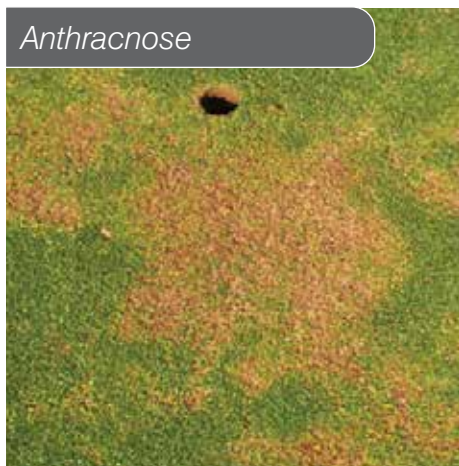
Fusarium



Key Features

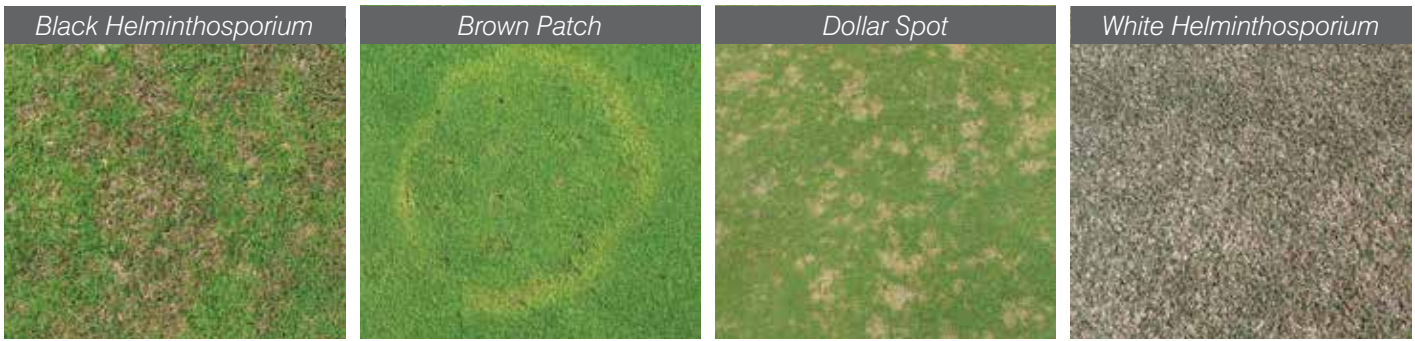
- > Provides curative, protectant and eradicant activity.
- > Excellent rainfast properties. Works in all weather conditions.
- > Broad spectrum of activity. Registered for the control of 9 turf diseases, including foliar and root pathogens.
- > Registered for the control of Leptosphaerulina and Curvularia. There are limited registered options for these pathogens.
- > Registered for the control of ERI diseases, both from a curative and preventative basis.
- > Provides contact, translaminar, mesosystemic and systemic activity, providing inside-out disease protection.
- > Contains two strong active ingredients for turf, with differing modes of action.
- > Available in multiple pack sizes. 500mL and 1L, to accommodate all turf growing situations.

Anthracnose



Leptosphaerulina





Tombstone Duo Fungicide – Use Rates & Label Recommendations

PATHOGEN	APPLICATION RATE	WATER RATE	KEY COMMENTS
Brown Patch (<i>Rhizoctonia solani</i>)	2L/ha (20mL/100m ²)	800-1600L/ha (8-16L/100m ²)	Apply sufficient irrigation quickly following irrigation to wash Tombstone Duo into the crown and upper root zone (3-6mm of irrigation). For preventative control apply on a 21-28 day interval when conditions are favourable for disease development. To control existing infections apply on a 14-21 day interval.
Dollar Spot (<i>Sclerotinia homoeocarpa</i>)	3L/ha (20mL/100m ²)		
Winter Fusarium or Fusarium Patch (<i>Microdochium nivale</i>)	2L/ha (20mL/100m ²)		
Anthraxnose (<i>Colletotrichum graminicola</i>)	2L/ha (20mL/100m ²)		
Secondary Diseases <i>Leptosphaerulina</i> spp., <i>Curvularia</i> spp.	2L/ha (20mL/100m ²)		Make monthly preventative applications from December to March.
Black and White Helminthosporium (<i>Bipolaris</i> spp., <i>Drechslera</i> spp., <i>Exserohilum</i> spp.)	2L/ha (20mL/100m ²) 280mL per bowling green		
ERI (Ectotrophic Root Infecting Fungi)	2L/ha (20mL/100m ²)		Make monthly preventative applications in the three months preceding the disease season (usually early Spring).
Spring Dead Spot	2L/ha (20mL/100m ²)		Apply as a preventive application in January to March after renovation and recovery of active growth. Make a second application one month later. Apply irrigation to wash Tombstone Duo into the root zone.

Note: Tombstone Duo is also registered for a range of ornamental and landscape plant diseases such as Azalea Petal Blight, Botrytis Blight, Grey Mould, Leaf Spots, Rusts (including Myrtle Rust), Powdery Mildew and Black Spot. For additional information, see the label.

Mode of Action

GROUP 3 11 FUNGICIDE

Tebuconazole, one active ingredient in Tombstone Duo, is a systemic fungicide that once absorbed by roots and leaves moves upwards (acropetal) within the plant. Tebuconazole possesses curative, protective and eradicator activity when controlling turfgrass fungi. Tebuconazole is a Group 3 fungicide. It works in controlling turf pathogens by disrupting the fungi's membrane function. It is classified as a DMI inhibitor as it stops the demethylation step in the biosynthesis of ergosterol, a vital component of cell walls in many fungi. Trifloxystrobin is the other molecule in Tombstone Duo Fungicide. Trifloxystrobin has the ability to strongly bond onto plant surfaces through penetration of the waxy layers. This forms a secure reservoir of fungicide to provide long-lasting, weather-protected disease control. Trifloxystrobin works by interfering with respiration in plant pathogenic fungi. It is a potent inhibitor of fungal spore germination and mycelial growth.

Maximising performance

- > Good turf disease control requires good coverage. Application should be made using sufficient water to ensure thorough coverage: 800-1,600L of water per hectare.
- > For preventative control apply Tombstone Duo on a 21-28 day interval when conditions are favourable for disease development. For curative control apply Tombstone Duo on a 14-21 day interval.
- > For Brown Patch and ERI disease control, apply sufficient irrigation quickly following irrigation to wash Tombstone Duo into the crown and upper root zone (3-6mm of irrigation).
- > For ERI disease control, make monthly preventative applications in the three months preceding the disease season (usually early Spring).
- > From a resistance management perspective, do not apply more than two consecutive sprays of Tombstone Duo unless mixed with a protectant fungicide from group 14, 28, M2, M3, M4 or M5.
- > Tombstone Duo acts very rapidly and where the turf is of a low nutritional status, a slight yellowing may be seen. This will be corrected by nitrogenous fertiliser applications. Where possible, it is recommended that a fertiliser program should precede the fungicide application.

Distributed by: